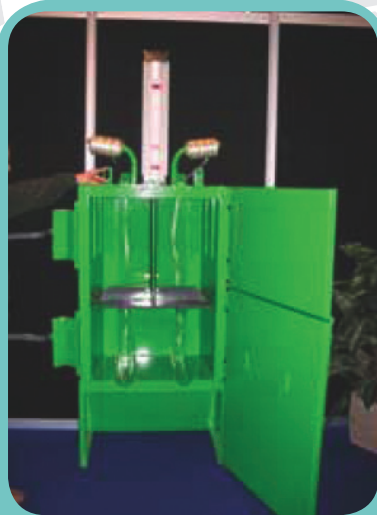


WR150 BALER



FEATURES

Front Tying System

New Baler Base

Protective Spools Cover

New Type of Handle

Top Guard for the Baler

Slotted Holes

BENEFITS

- ◆ Ease of Tying
- ◆ Baler can be moved by means of Pallet Truck
- ◆ Completely Weatherproof Baler
- ◆ Tidier Looking Baler
- ◆ Eliminates Scratching of Paint
- ◆ More User-Friendly
- ◆ Top Opening for Extra Safety
- ◆ Weatherproof Baler
- ◆ Ease of Maintenance
- ◆ Smoother Feeding of Strapping



WRI50 BALER

TECHNICAL SPECIFICATION WRI50 AIR AND HYDRUALIC BALER

STANDARD FEATURES	WRI50	WRI50H
Baling Force	Up to 2 T	Up to 3 T
Bale Size Indicator	External	External
Number of Rams	1	1

Technical Specification	WRI50	WRI50H
Motor Type	220 S Phase	220 S Phase
Operator Control	AIR	On/ Off Switch
Auto Shut Down	Standard	Standard
Operating Cycle	Manual Up/ Down	Manual Up/ Down
Emergency Stop	Standard	Standard
Opt Cycle time	30 Secs	30 Secs

Machine Dimensions	WRI50	WRI50H
Height	2010 mm	2010 mm
Width	750 mm	750 mm
Depth	420 mm	420 mm

Bale Dimensions	WRI50	WRI50H
Height	500 mm (Var)	500 mm (Var)
Width	600 mm	600 mm
Depth	400 mm	400 mm

Approx Bale Weight	WRI50	WRI50H
Weight	20 - 45 Kgs	20 - 45 Kgs